

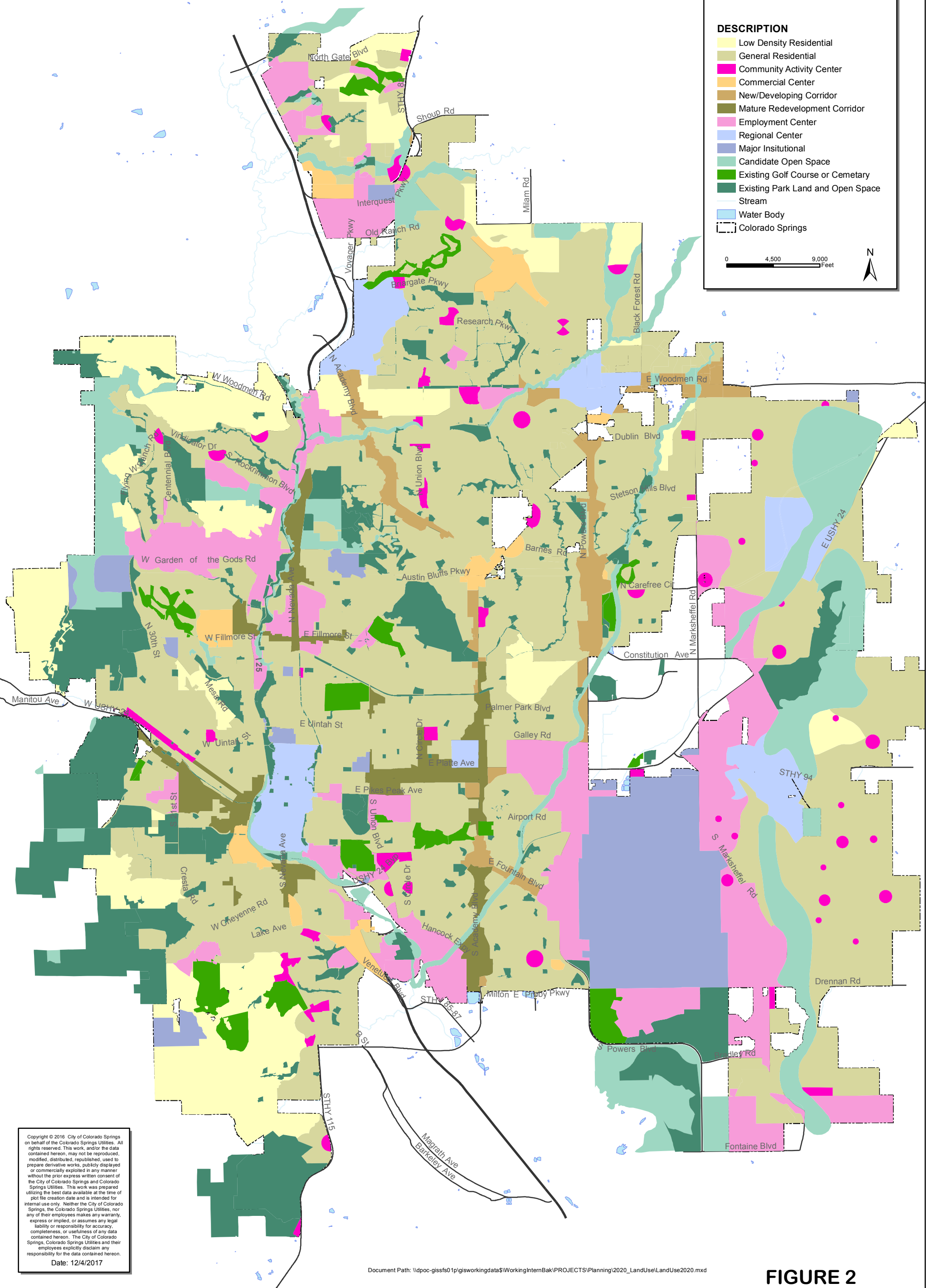
City of Colorado Springs 2020 Land Use

Legend

DESCRIPTION

- Low Density Residential
- General Residential
- Community Activity Center
- Commercial Center
- New/Developing Corridor
- Mature Redevelopment Corridor
- Employment Center
- Regional Center
- Major Institutional
- Candidate Open Space
- Existing Golf Course or Cemetery
- Existing Park Land and Open Space
- Stream
- Water Body
- Colorado Springs

0 4,500 9,000 Feet



Copyright © 2016 City of Colorado Springs on behalf of the Colorado Springs Utilities. All rights reserved. This work, and/or the data contained herein, may not be reproduced, modified, distributed, republished, used to prepare derivative works, publicly displayed or commercially exploited in any manner without the prior express written consent of the City of Colorado Springs and Colorado Springs Utilities. This work was prepared utilizing the best data available at the time of plot file creation date and is intended for internal use only. Neither the City of Colorado Springs, the Colorado Springs Utilities, nor any of their employees makes any warranty, express or implied, or assumes any legal liability or responsibility for accuracy, completeness, or usefulness of any data contained herein. The City of Colorado Springs, Colorado Springs Utilities and their employees explicitly disclaim any responsibility for the data contained herein.
Date: 12/4/2017

FIGURE 2